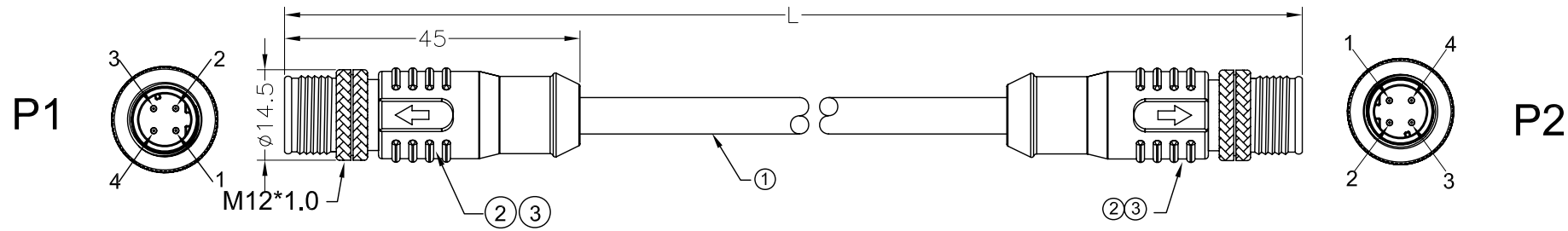


|       |  |  |  |
|-------|--|--|--|
| T/NO. |  |  |  |
|       |  |  |  |
|       |  |  |  |

| REVISIONS |                 |            |            |
|-----------|-----------------|------------|------------|
| REV.      | DESCRIPTION     | DATE       | REVISED BY |
| A0        | CREATED DRAWING | 2015/06/02 | ZERA       |
|           |                 |            |            |
|           |                 |            |            |



**Detailed Product Description:**

Waterproof connector rating is IP67/IP68  
 Protected from dust and water during immersion,  
 resistant to many oils and chemical etc

**Electrical character**

Rating voltage: 250V AC/DC ,  
 Insulation resistance: >100MΩ  
 Rating current :4A  
 Contact resistance≤10 mΩ

**Other Specification**

Contact PIN: Brass with Gold plating.  
 Coupling nut/screw: Brass with nickel plating  
 Insulation plastic: PVC  
 Degree of protection: IP67/IP68

\*ALL MATERIALS ARE RoHS COMPLIANT.

| CUSTOMER P/N   | SGN P/N         | L(mm)     |
|----------------|-----------------|-----------|
| M12MM4PPUR-020 | SGNYD1506006-2A | 2000±20   |
| M12MM4PPUR-030 | SGNYD1506006-2B | 3000±30   |
| M12MM4PPUR-050 | SGNYD1506006-2C | 5000±50   |
| M12MM4PPUR-100 | SGNYD1506006-2D | 10000±100 |

**WIRE LIST**

| P1    | COLOR | P2    |
|-------|-------|-------|
| 1     | BROWN | 1     |
| 2     | WHITE | 2     |
| 3     | BLUE  | 3     |
| 4     | BLACK | 4     |
| SHELL | BRAID | SHELL |

| ITEM | PART NO. | SPECIFICATION                                  | Q'TY | UNIT |
|------|----------|--|------|------|
| ③    | PL00008  | BLACK TPU 105°                                 | 12   | g    |
| ②    | PD000048 | M12 D Coding 4pin male connector with shield   | 2    | SET  |
| ①    | N/A      | UL20549 22AWG*4C+AEB JACKET BLACK PUR OD=6.0mm | 1    | PCS  |

|              |  |                              |  |                          |  |   |  |
|--------------|--|------------------------------|--|--------------------------|--|---|--|
|              |  | TITLE                        |  | PROJECTION:              |  | TOLERANCES UNLESS NOTED:<br>.x ±0.15<br>.xx ±0.10<br>.xxx ±0.05<br>x.° ±1.0°<br>.x° ±0.5° |  |
|              |  | M12 D 4P/M TO M12 4P/M CABLE |  |                          |  |   |  |
| DRAWN BY:    |  | DATE:                        |  | CUSTOMER PART NUMBER     |  | UNITS: mm   |  |
| CHECKED BY:  |  | DATE:                        |  | SGN PART NUMBER          |  | SCALE: NONE   |  |
| SAELS BY:    |  | DATE:                        |  | DRAWING NUMBER           |  | SIZE:   |  |
| APPROVED BY: |  | DATE:                        |  | TOLERANCES UNLESS NOTED: |  | SHEET:  |  |