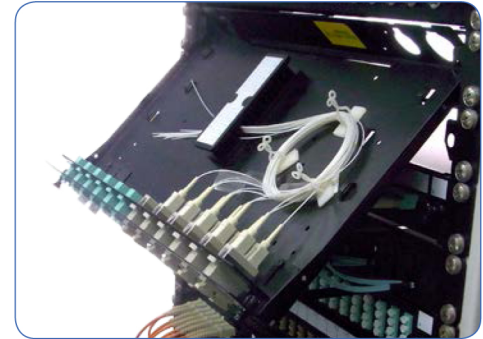
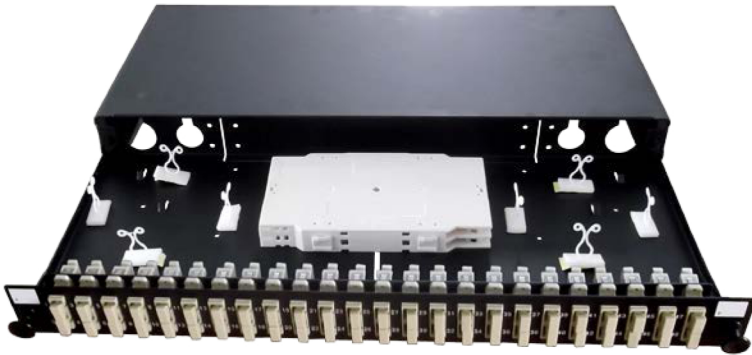


P24D-Sliding 24 Position SC Duplex /LC Quad Panel

45°
working angle



The basic sliding 24-position SC duplex or LC quad panel system is supplied unloaded, ready for you to install the adapter type of your choice. The panel can also be pre-loaded complete with the required adapters, or pre-loaded with pigtailed to meet your project needs. An optional simple splice management kit can also be included.

The recessed adapter mounting means that fiber cables will have a better bend radius within the panel. The unique inner bracket design reduces adapter installation time by 80% compared to competitors' panels. The tray is locked in place by two plastic latches and lowers to 45° when fully extended. Installation is simple, and the panel's angled slide-out feature ensures easy access to the panel even after installation on the rack.

Features/Benefits

- ▶ Recessed panel mounting option
- ▶ Recessed adapters mounting giving better bend radius
- ▶ Inner bracket design reduces adapter installation by 80%
- ▶ Detachable rear plate for larger cable entry
- ▶ No exposed screws
- ▶ 45° working angle
- ▶ Screen printed panel number & port number identifier
- ▶ High quality finish, no sharp edges
- ▶ 4 rear cable entries (2x PG16, 2x PG13.5)
- ▶ Optional fiber management kit includes:
8x bunny clip, 1x cable gland (PG13.5), 1x warning label, 1x fiber bridge
- ▶ Environmentally friendly materials & packaging
- ▶ Available in private labeling option

recessed adapter mounting



Competitor adapter mounting



Technical Characteristics

PARAMETER	VALUE
Height	1U (44.4mm)
Width	483mm
Depth	205mm
Net weight	2.3kgs
Packaged weight	2.6kgs
Packaged dimensions	530mmx250mm x45mm (WxDxH)
Suitable adapter type	SC duplex / LC quad
Number of ports	24
Rear cable port Φ25mm	2
Rear cable port Φ20mm	2
Mounting adjustment range	50mm
Material	Cold Rolled Steel
Material thickness	1.2mm
Material coating	Powder coating
Standard color	Black RAL 9004
Operating temperature	-40°C to + 60°C
Compliant to	RoHS,Reach / SvHC

Part Number Generator

