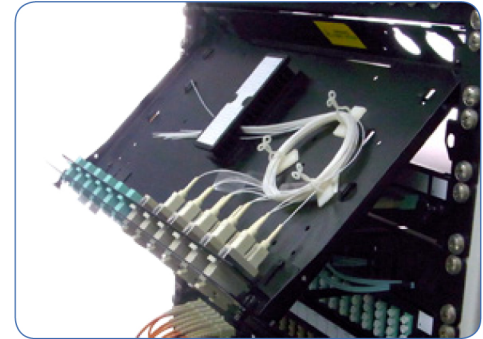


P24S-Sliding 24 Position SC/LC Panel

45°
working angle



sliding 24 positions SC simplex or LC duplex panel system in its basic form is supplied with the panels unloaded without adapters ready for you to install the adapter of your choice. The panel can also be pre-loaded complete with the required adapter or pre-loaded with pigtailed to meet your project needs. An optional simple splice management kit can also be included.

The recessed adapter mounting gives the better bend radius for fiber cable. compared with competitors. The tray is locked in place with two plastic latches, when fully extended the tray is designed to lower to 45°. This provides the perfect working platform for simple installation or easy maintenance and access even after the panel is installed in the rack.

unique inner bracket design saves 80% of adapters installation time

Features/Benefits

- ▶ Recessed panel mounting option
- ▶ Recessed adapters mounting giving better bend radius
- ▶ Inner bracket design saves 80% of adapters installation time
- ▶ Detachable rear plate for larger cable entry
- ▶ No exposed screws
- ▶ 45° working angle
- ▶ Screen printed panel number & port number identifier
- ▶ High quality finish, no sharp edges
- ▶ 4 rear cable entries (2x PG16, 2x PG13.5)
- ▶ Optional fiber management kit includes:
8x bunny clip, 1x cable gland (PG13.5), 1x warning label, 1x fiber bridge
- ▶ Environmentally friendly materials & packaging
- ▶ Available in private labeling option

Technical Characteristics

PARAMETER	VALUE
Height	1U (44.4mm)
Width	483mm
Depth	205mm
Net weight	2.3kgs
Packaged weight	2.6kgs
Packaged dimensions	530mmx250mm x45mm (WxDxH)
Suitable adapter type	SC Simplex / LC Duplex
Number of ports	24
Rear cable port Φ25mm	2
Rear cable port Φ20mm	2
Mounting adjustment range	50mm
Material	Cold Rolled Steel
Material thickness	1.2mm
Material coating	Powder coating
Standard color	Black RAL 9004
Operating temperature	-40°C to + 60°C
Compliant to	RoHS,Reach / SvHC

recessed adapter mounting



Competitor adapter mounting



Part Number Generator

