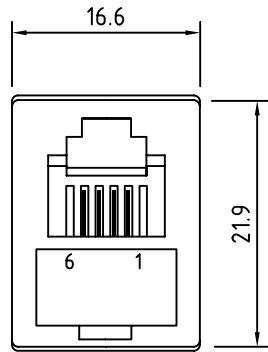
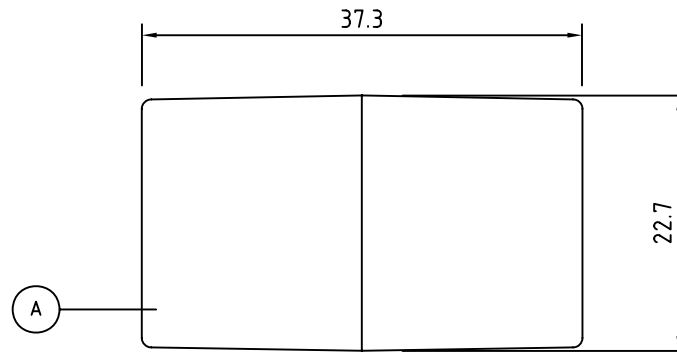


REV.	DATE	FILE No.
1.0	2011-9-1	PA2-6P4C

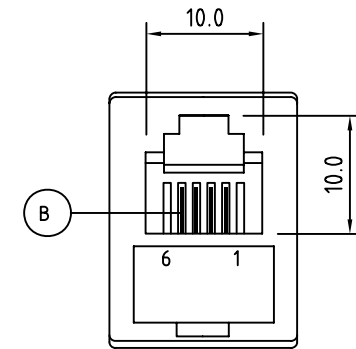


6P4C JACK(L)

SIDE VIEW

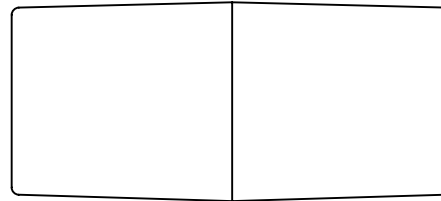


PA2 FRONT VIEW



6P4C JACK(R)

SIDE VIEW



WIRING DIAGRAM

6P4C JACK(R) 6P4C JACK(L)

2-----2(BLACK)

3-----3(RED)


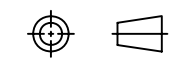
4-----4(GREEN)

5-----5(YELLOW)

SPECIFICATION:

ITEM	PART NAME	MATERIAL	COLOR	QTY.
A	PA2 FRONT & BOTTOM COVER	ABS#757	BLACK	1SET.
B	3 MIC GOLDEN WIRE FLASH	BRASS	GOLD	8

NOTE:ALL MATERIALS ARE COMPLIANT TO "RoHS"

CUSTOMER: DIGGELMANN		 Tai Yip Electrical Co., Ltd.
CUST. P/N: TA310-64BK		
S/O:	S/N:	PART No.: PA2-6P4C/BK
DRAWING No.		PART NAME: INLINE COUPLER
DRAWN BY	Lingqi Meng	UNLESS OTHERWISE SPECIFIED, ALL DIMENSIONS ARE IN MM. TOLERANCE:DECIMAL .X ±0.1 .XX ±0.05 ANGLE ±1/2°
CHECKED BY	Zhongjiao/Baifa	
APPROVED BY	Chenhan	
		 SHEET 1 OF 1 SCALE NO