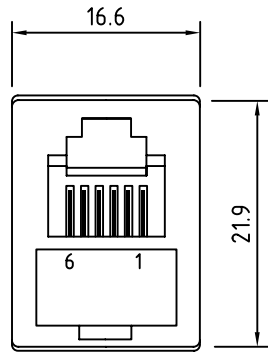
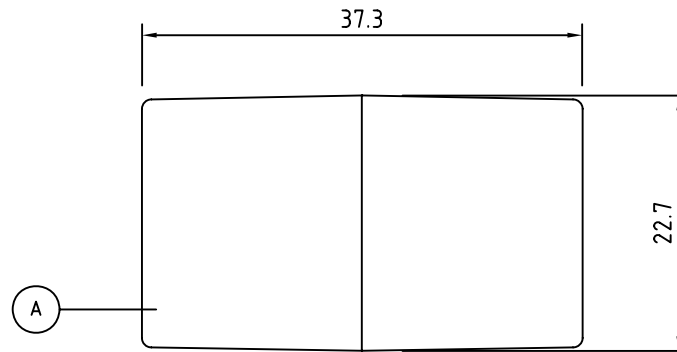


REV.	DATE	FILE No.
1.0	2011-8-25	PA2-6X6

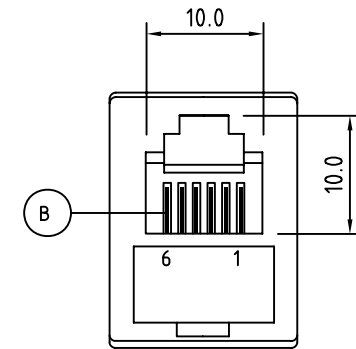


6P6C JACK(L)

SIDE VIEW

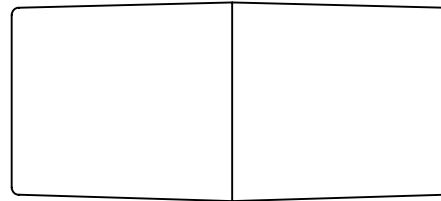


PA2 FRONT VIEW



6P6C JACK(R)

SIDE VIEW




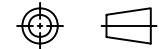
WIRING DIAGRAM

- | | |
|--------------|--------------|
| 6P6C JACK(R) | 6P6C JACK(L) |
| 1----- | 1(WHITE) |
| 2----- | 2(BLACK) |
| 3----- | 3(RED) |
| 4----- | 4(GREEN) |
| 5----- | 5(YELLOW) |
| 6----- | 6(BLUE) |

SPECIFICATION:

ITEM	PART NAME	MATERIAL	COLOR	QTY.
A	PA2 FRONT & BOTTOM COVER	ABS#757	BLACK	1SET.
B	3 MIC GOLDEN WIRE FLASH	BRASS	GOLD	12

NOTE:ALL MATERIALS ARE COMPLIANT TO "RoHS"

CUSTOMER: DIGGELMANN		 Tai Yip Electrical Co.,Ltd.
CUST. P/N: TA310-6BK		
S/O:	S/N:	PART No.: PA2-6X6/BK
DRAWING No.		PART NAME: INLINE COUPLER
DRAWN BY	Lingqi Meng	UNLESS OTHERWISE SPECIFIED, ALL DIMENSIONS ARE IN MM. TOLERANCE:DECIMAL .X ±0.1 .XX ±0.05 ANGLE ±1/2°
CHECKED BY	Zhongjiao/Baifa	
APPROVED BY	Chenhan	
		
		SHEET 1 OF 1 SCALE NO